

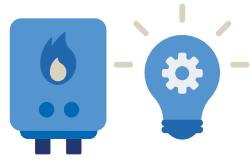
UK Energy Disruption Planning

Zurich Resilience Solutions

November 2022



Disruption Scenarios for Analysis



No Gas & No Electricity



No Electricity



No Gas

Planning Assumptions

- Disruption is more likely at peak demand times – 4-7pm – but could happen anytime
- Reconnection could take an additional hour
- Disruption is more likely during periods of cold weather
- Outages should be announced at least 24 hours in advance

Considerations for Planning

- Ability to operate sites or premises safely without heat or power
- Increased vulnerability of lone or mobile / peripatetic workers
- Water supplies could be affected, e.g., if relying on water pumps
- Availability of people or employees, especially those with caring responsibilities
- Impact on internal and external ICT networks and infrastructure
- Ability to communicate and make decisions using electronic equipment could be restricted
- Transport networks: airports, trains, ports, roads and distribution centres could suffer delays
- Impact on critical suppliers and their ability to operate as normal
- People and site security could be reduced if alarms, lighting and barriers cannot operate as normal
- Safe shutdown or startup of plant and equipment could extend the length of the disruption
- Consider unintended consequences of outages or energy saving measures: risks to people, environment, assets & third parties
- Would your response change if the disruption is unannounced or lasts longer than the worst-case scenario?

Contingency Planning



Analysis

Analyse **potential impact** of disruption scenarios on critical activities, sites and key suppliers

What are the critical activities, tasks, sites or suppliers most at risk?

What are the primary & secondary impacts of each disruption scenario?



Options

Identify **recovery options** to recover critical activities, sites or key suppliers

What existing contingency or resilience do we have for these scenarios?

What other options are available to us in each disruption scenario?



Plan

Develop or refresh your plan to **implement** the chosen recovery options & respond to guidance

How will we make decisions & communicate during any disruption?

How will we implement – in practical terms – the recovery options chosen?



Rehearse

Walk through contingency plans to **stress test** with the people who will implement them

Do the people who will implement the plan understand & agree with it?

What are the potential barriers to a successful response?

This is a general description of (insurance) services such as risk engineering or risk management services by Zurich Resilience Solutions, which is part of the Commercial Insurance business of Zurich Insurance Group, and does not represent or alter any insurance policy or service agreement. Such (insurance) services are provided to qualified customers by affiliated companies of Zurich Insurance Company Ltd, including but not limited to: Zurich American Insurance Company, 1299 Zurich Way, Schaumburg, IL 60196, USA; The Zurich Services Corporation, 1299 Zurich Way, Schaumburg, IL 60196, USA; Zurich Insurance plc, Zurich House, Ballsbridge Park, Dublin 4, Ireland; Zurich Commercial Services (Europe) GmbH, Platz der Einheit, 2, 60327 Germany; Zurich Management Services Limited, The Zurich Centre, 3000b Parkway, Whiteley, Fareham, Hampshire, PO15 7JZ, UK; Zurich Insurance Company Ltd, Mythenquai 2, 8002 Zurich, Switzerland; Zurich Australian Insurance Limited, ABN 13 000 296 640, Australia.

The opinions expressed herein are those of Zurich Resilience Solutions as of the date of the release and are subject to change without notice. This document has been produced solely for informational purposes. All information contained in this document has been compiled and obtained from sources believed to be reliable and credible, but no representation or warranty, express or implied, is made by Zurich Insurance Company Ltd or any of its affiliated companies (Zurich Insurance Group) as to their accuracy or completeness. This document is not intended to be legal, underwriting, financial, investment, or any other type of professional advice. Zurich Insurance Group disclaims any and all liability whatsoever resulting from the use of or reliance upon this document. Nothing express or implied in this document is intended to create legal relations between the reader and any member of Zurich Insurance Group.

Certain statements in this document are forward-looking statements, including, but not limited to, statements that are predictions of or indicate future events, trends, plans, developments or objectives. Undue reliance should not be placed on such statements because, by their nature, they are subject to known and unknown risks and uncertainties, and can be affected by numerous unforeseeable factors. The subject matter of this document is also not tied to any specific service offering or an insurance product, nor will it ensure coverage under any insurance policy.

This document may not be distributed or reproduced, either in whole or in part, without prior written permission of Zurich Insurance Company Ltd, Mythenquai 2, 8002 Zurich, Switzerland. No member of Zurich Insurance Group accepts any liability for any loss arising from the use or distribution of this document. This document does not constitute an offer or an invitation for the sale or purchase of securities in any jurisdiction.

Zurich Resilience Solutions

