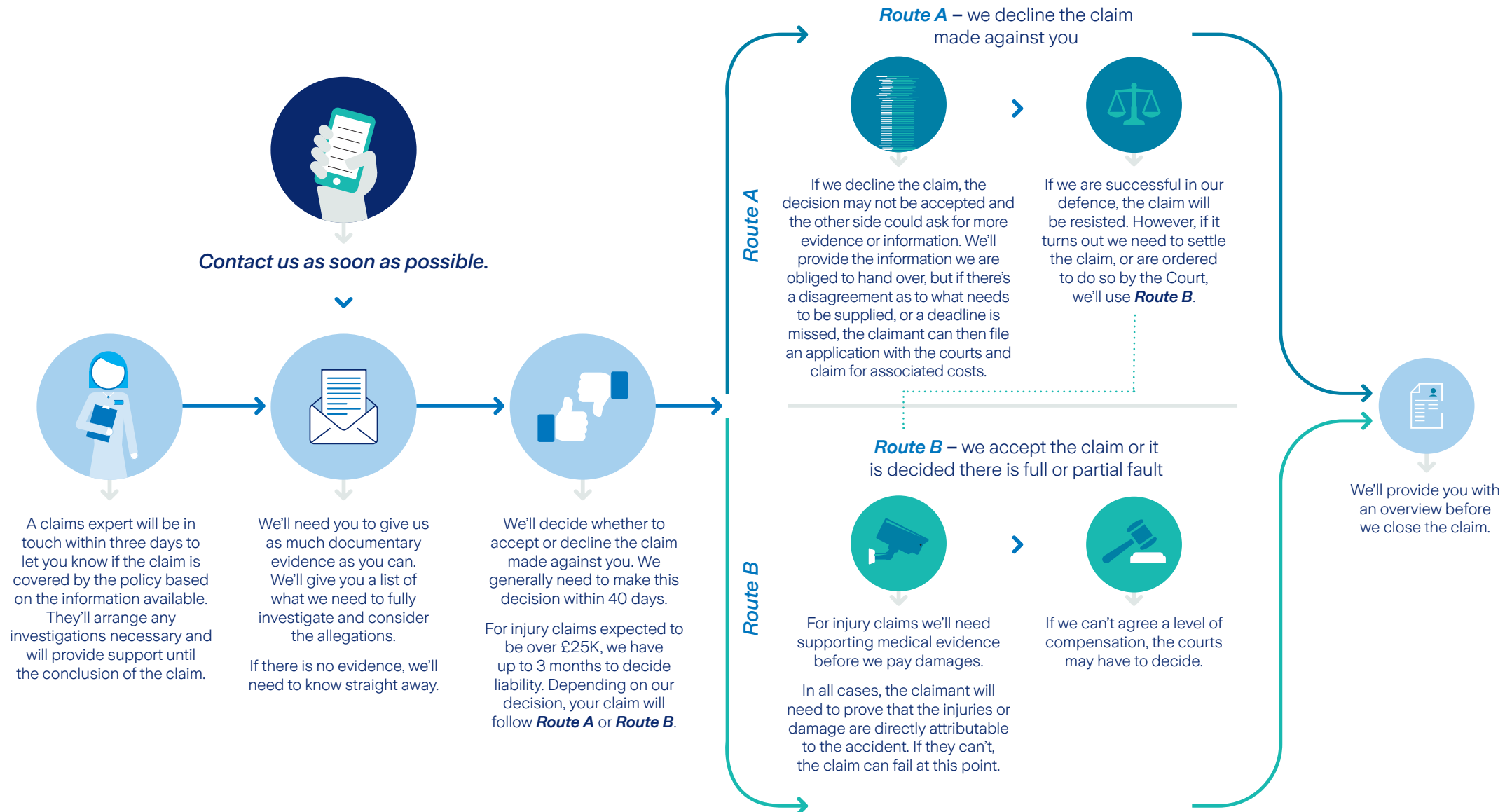


What happens when an employers or public liability claim is made



Please let us know if you would like a copy of this
in large print or braille, or on audiotape or CD.

Zurich Insurance Company Ltd

A public limited company incorporated in Switzerland. Registered in the Canton of Zurich, No. CHE-105.833.114, registered offices at Mythenquai 2, 8002 Zurich. UK Branch registered in England and Wales no BR000105. UK Branch Head Office: The Zurich Centre, 3000 Parkway, Whiteley, Fareham, Hampshire PO15 7JZ.

Zurich Insurance Company Ltd is authorised and regulated in Switzerland by the Swiss Financial Market Supervisory Authority FINMA. Authorised by the Prudential Regulation Authority. Subject to regulation by the Financial Conduct Authority and limited regulation by the Prudential Regulation Authority. Details about the extent of our regulation by the Prudential Regulation Authority are available from us on request. Our firm reference number is 959113.

Communications may be monitored or recorded to improve our service and for security and regulatory purposes.

© Copyright – Zurich Insurance Company Ltd 2023. All rights reserved. Reproduction, adaptation or translation without prior written permission is prohibited except as allowed under copyright laws.